

## CHALLENGES

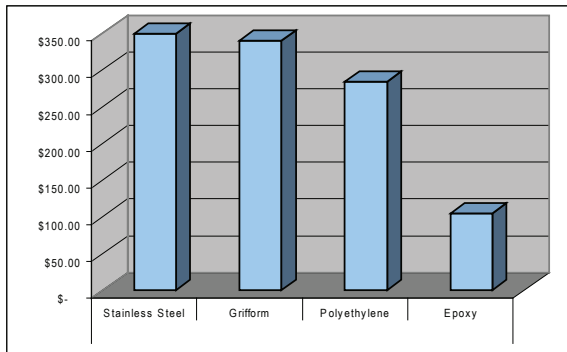
- Varying depth sink bowls.
- Bowls that don't stain easily.
- Bowls that don't foster bacteria and/or mold growth.
- Variety of color choices.

## SOLUTION

- Griform Innovations® Utility Sinks developed to address the rigorous demands required in anywhere.

## RESULTS

- A wide variety of sink sizes available by part number.
- Color pallet that minimize stain from being visible.
- Renewable surface for ease of care.
- Built of nonporous DuPont™ Corian®.
- When used with DuPont™ Corian® countertop you are able to customize any space to be both functional and aesthetically pleasing.



## ATTRIBUTED VALUE OF THE GRIFORM® UTILITY SINKS

- Made to most industry sizes
- Resistant to common chemicals
- Lower maintenance cost
- DuPont™ Corian® can help earn points for LEED program
- Easy installation
- Extended life cycle
- Mounts under or over any countertop material
- Custom size and configuration available

## Griform Innovations®

### Utility Sinks

Determined to improve your environment.

Griform Innovations® has developed many style options of Utility Sinks. These sinks are prepared for ease of installation. We have sinks that meet special needs for when deep bowl applications are required. By adding a no drip front edge on the counter makes this a popular sink that is stain resistant in the laboratory. All of the Griform Innovations® Utility Sinks comply to the same rigid standards and can be used equally well.



## Utility Sinks



*Distinctive Excellence*

Please visit [www.Griform.com](http://www.Griform.com)  
for additional product information.

Griform Innovations®

PO Box 258 Glide, OR 97443

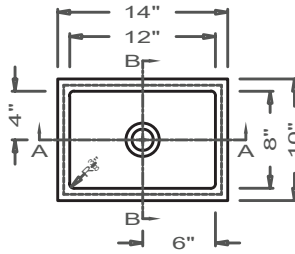
541-496-0313

SJLAB-3-17

**Griform Innovations®**  
Utility Sinks

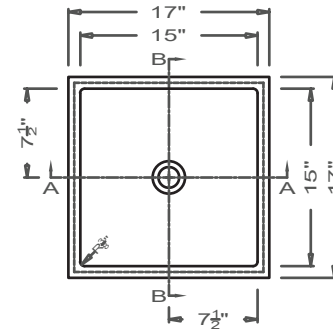
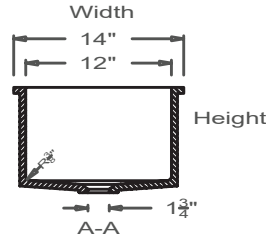
For a durable renewable sink surface in any environment Griform Innovations® offers a large variety of sizes and colors. Featuring nonporous material which makes this an ideal choice for any environment. The many color options give you the opportunity to maximize the visual beauty of the utility sink.

All sinks are available for undermount or overmount installation.



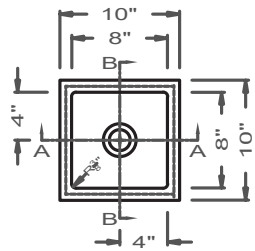
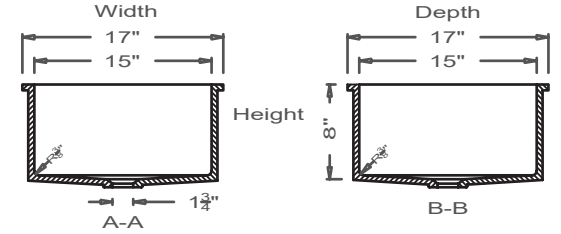
**UC1288U**

This style available in Heights from 3" to 12".



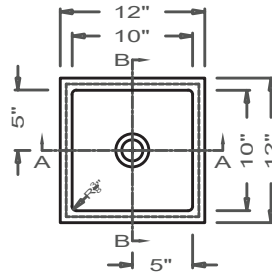
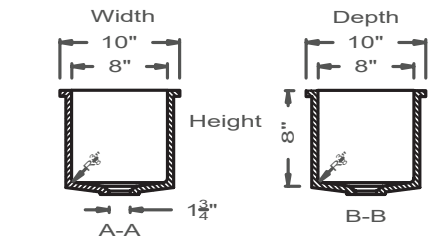
**UC15158U**

This style available in Heights from 3" to 12".



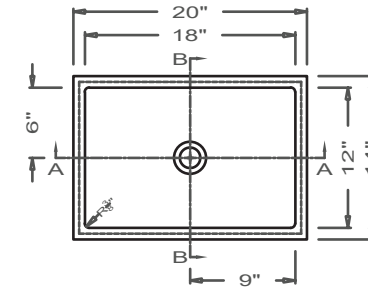
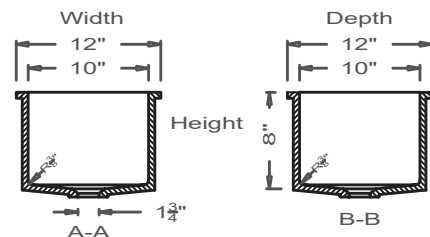
**UC888U**

This style available in Heights from 3" to 12".



**UC10108U**

This style available in Heights from 3" to 12".



**UC18128U**

This style available in Heights from 3" to 12".

