

CHALLENGES

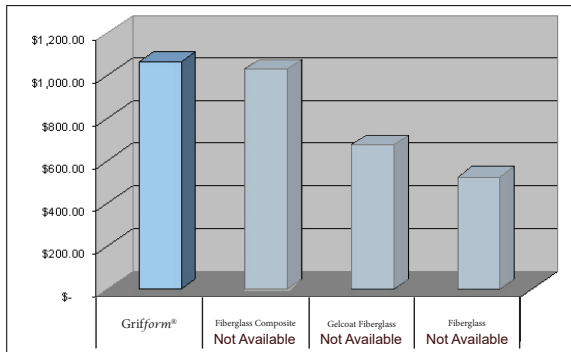
- Water spilling out on the floor.
- No Barrier Free solutions available.
- Wide choice of color and style.
- Easily installed.

SOLUTION

- Griform Innovations® custom certified shower pans in DuPont™ Corian®.
- Griform Innovations® Shower Pans designed with your space and specifications applied, in your choice of over 100 DuPont™ Corian® colors with Overflow Protection.

RESULTS

- When applied to a Griform® Barrier Free shower pan it makes for a monolithic - seamless design.
- Material is nonporous so it does not support the growth of micro organisms.
- Easily maintained for lasting value.



ATTRIBUTED VALUE OF THE GRIFORM®

Overflow Protection

- A very effective solution for water control with a barrier free entry.
- DuPont™ Corian® can help earn points for LEED program
- Easy install.
- Extended life cycle
- Made to custom size and configuration
- Custom drain location
- Class 1/A fire rated.
- Requires no liner
- Slip resistant surgance

Policies

Order Policy: All Purchase Orders need to be made with attention to specified lead times necessary to produce the specified product. All Rush Orders are subject to additional 35% charge per item if outside the prescribed lead times. If a Rush Order status is prescribed and delivery on regular schedule is not acceptable any deviation from the normal schedule will be at additional packaging and shipping charge to the customer, as applicable.

Receiving/Acceptance Policy: If the product is as ordered, but the order has been incorrectly placed it shall be the full responsibility of the purchasing agency to accept and make payment on the item as per purchase order agreement. The replacement of the item will be handled as a new purchase order with the established lead times and regular delivery schedule for that particular product.

Return Policy: If the receiver discovers a manufacturer defect due to material or workmanship, notification needs to be made within 72 hours of receipt and the process for return shall be as follows: The product is to be returned fully and properly packed in original packaging to insure no damage is incurred to the product. After inspection is made and determined that the part has not been manufactured according to Griform Innovations' standard we will replace or repair the part at our discretion.

Because all parts Griform Innovations® produces for the purchasing agency are built to order, repair or replacement orders may require additional time to process. A Return Authorization Number is required to process a return. This number can be acquired by written notice from the purchasing agency. In the written notice we require the purchasing agency's PO Number, Part Number, item description, date received, and the noted defect. For a return credit to be considered the product will be returned fully and properly packed in its original packaging so as to ensure no damage is done to the product.

Griform Innovations® does not give assurance that dye lots will match other sheet good products and/or that the process might not change these characteristics.

Please visit www.Griform.com
for additional product information.

Griform Innovations®

PO Box 258 Glide, OR 97443

541-496-0313

SJOP-3-17

Overflow Protection

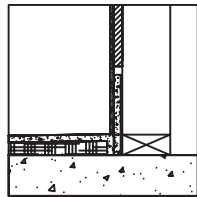


Distinctive Excellence

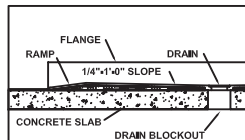
Griform Innovations®
Barrier Free Overflow Protection

Griform Innovations® offers “New and efficient Overflow Protection”. The most recent addition to the industrie’s need has been developed by Griform® because of user demands. “Overflow protection”, is available on any style.

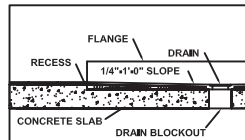
A commonly raised concern when installing a barrier-free shower stall is how to prevent the water from escaping the shower stall. This can be accomplished using an Overflow Protected Entry developed by Griform Innovations®. In traditional barrier free showers, when a blockage occurs, it is going to cause a flood. With Griform’s Overflow Protected Entry flooding will not be a problem.



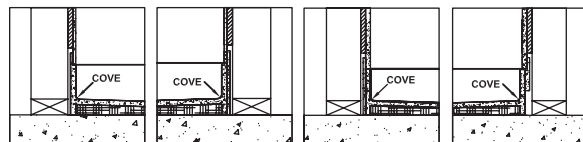
STRAIGHT WALL
1/4" OR 1/2" WALLS



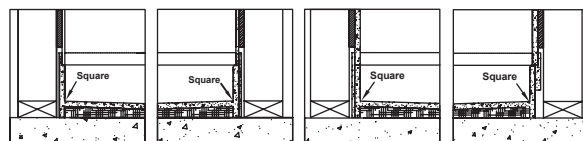
LOW EGRESS THRESHOLD OPTION



NO EGRESS THRESHOLD OPTION

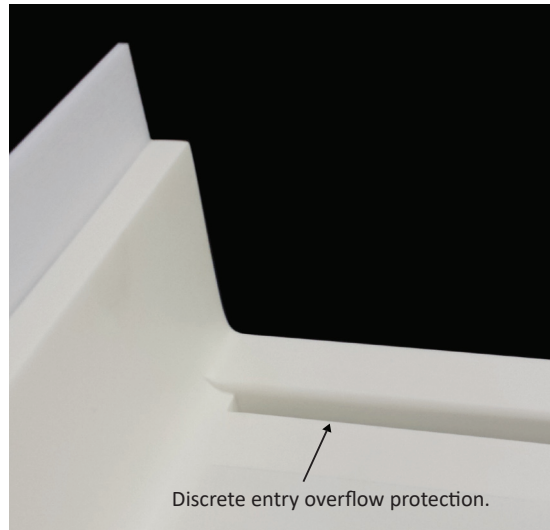


COVED WALL OPTION #1 1/2" WALLS
COVED WALL OPTION #2 1/2" WALLS
COVED WALL OPTION #3 1/2" WALLS
COVED WALL OPTION #4 1/2" WALLS



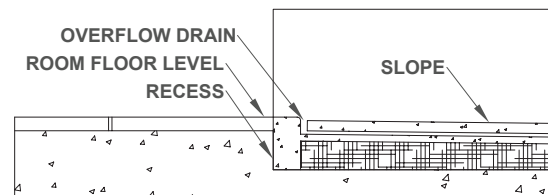
SQUARE WALL OPTION #1 1/2" WALLS
SQUARE WALL OPTION #2 1/2" WALLS
SQUARE WALL OPTION #3 1/2" WALLS
SQUARE WALL OPTION #4 1/2" WALLS

Barrier Free Overflow Protection



Discrete entry overflow protection.

Two seemingly contradictory factors, a “no-threshold” entrance and adequate water control, can be now provided in the same shower unit with Griform Innovations® “New and efficient Overflow Protection”.



NO EGRESS
OVERFLOW PROTECTED ENTRY

How to Measure a Custom Drain Location

1. Measure the distance from the out side of the shower pan wall to the center of the drain on the back and one side wall of the pan.
2. The center of the drain must be at least 4” from the shower pan walls.
3. The distance between the stud wall and the shower pan wall must be at least 1/8” to allow for shower pan expansion.
4. Make other adjustments based on the thickness of the wall material used.



WARRANTY

Griform Innovations® warrants to the original purchaser that the product shall be free from defects in material, workmanship and manufacture for twelve months.

The original purchaser must convey the product to Griform Innovations® at the purchasers’ expense. If Griform Innovations® agrees that the material and workmanship of the product was defective, Griform Innovations® will repair or replace the product, at its discretion, and convey the repaired or new product to the purchaser at the expense of Griform Innovations®.

Repair or replacement is the sole remedy provided by this warranty, and there are no warranties that extend beyond the description on the face hereof.

Griform Innovations® EXPRESSLY DISCLAIMS ANY IMPLIED WARRANTY OF MERCHANTABILITY OR ANY IMPLIED WARRANTY OF FITNESS FOR A PARTICULAR PURPOSE.